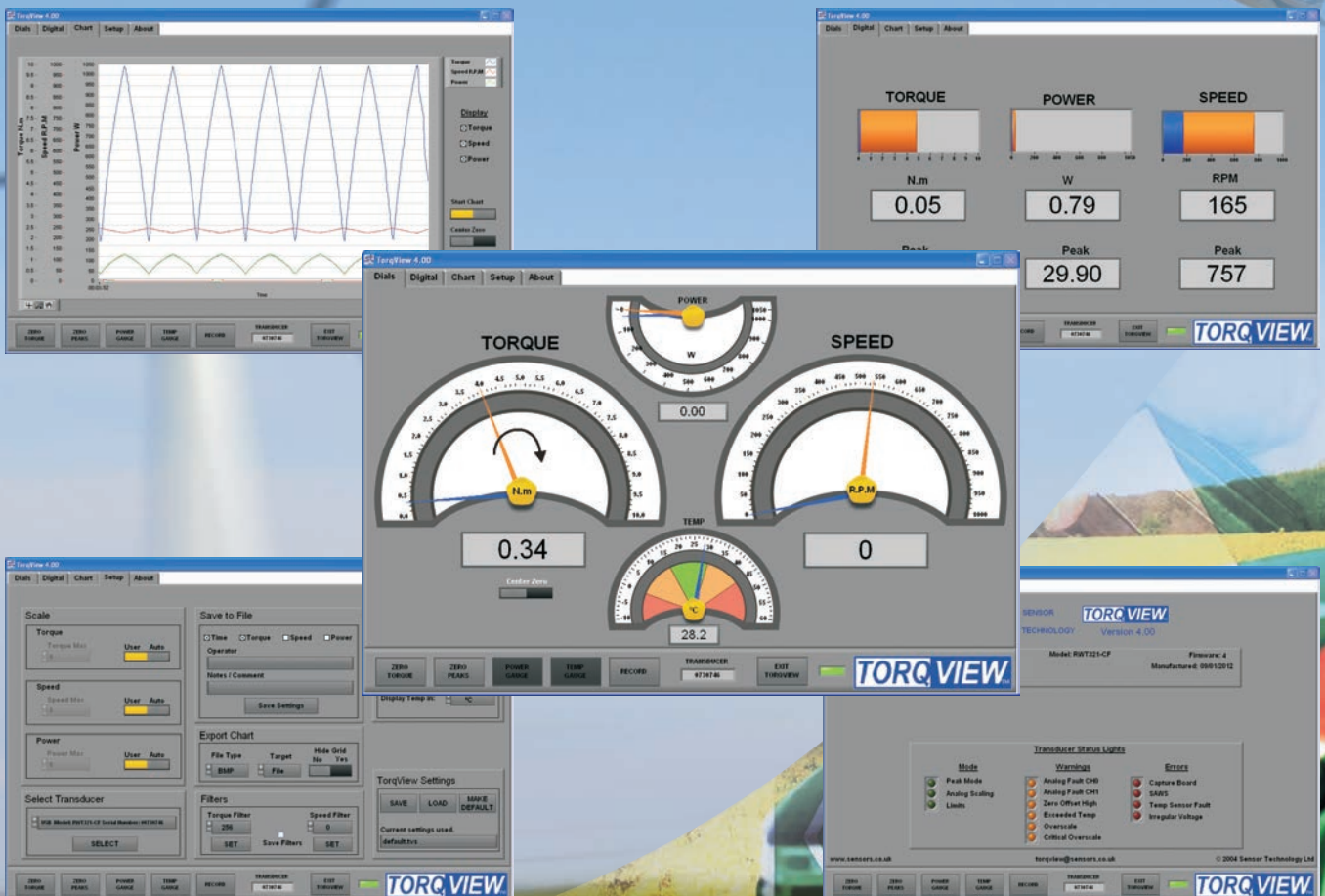


# TORQVIEW™

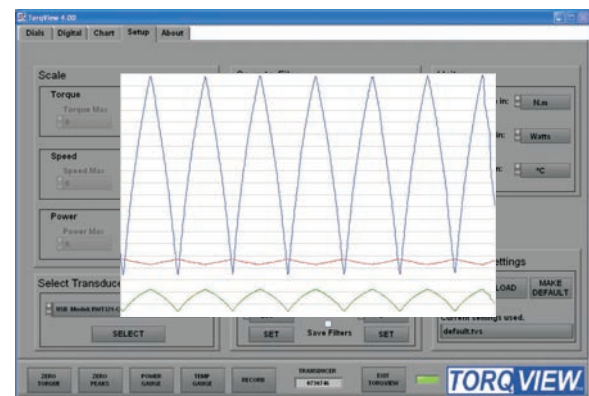
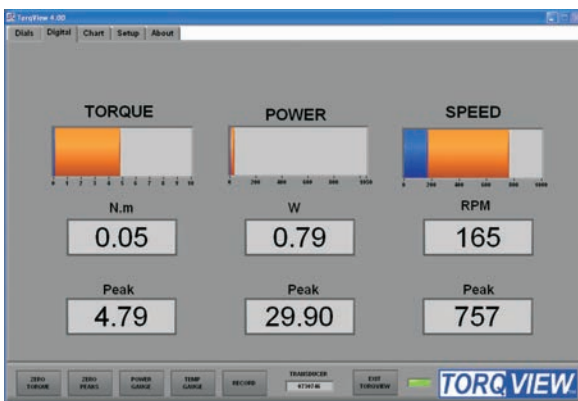
## Advanced Torque Monitoring PC Interface Software



## Advanced Torque Monitoring PC Interface Software

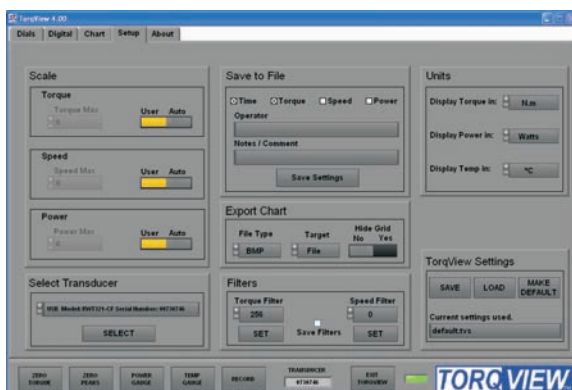
**TORQ VIEW** is an easy to use advanced torque monitoring software available to operate in conjunction with the SGR520, SGR540, RWT420, RWT440, RWT460 and ORT240 Series Transducers to provide a flexible display, real time plotting and data recording facility.

**TORQ VIEW** has been written using National Instruments LabVIEW, and as it is a self running executable file so LabVIEW is not required to run this software.



### Hardware requirements (Recommended)

Sensor Technology recommends a PC running Windows 10/8/7 with a minimum of 1GB of RAM; a minimum screen resolution of 1024 x 768 pixels; a Pentium 4 or equivalent processor; and a minimum of 650MB free disk space



### Benefits

- Simple installation using serial port or USB.
- Ease of operation (user friendly, a variety of user interface settings such as scales, units, etc.)
- 3 types of display: dials, digital bars and chart graph.
- Wide choice of displayed units (SI, FPS and MKS)
- Displays torque, RPM, power and temperature. Output a text file compatible with Matlab, Excel.
- LabView VIs available for users to design their own Interfaces
- DLLs available for users to write their own custom software process control applications.
- Data recording facility.
- User configurable settings